

Oranga Tamariki practice standards



See and engage tamariki

I will see and engage with each tamaiti I am working with, in order to understand their needs, build their trust and ensure they have a say in decisions.



See and engage whānau, wider family, caregivers and when appropriate victims of offending by tamariki

I will see and engage with family, whānau, caregivers and victims, in order to understand their needs and ensure they have a say in decisions about te tamaiti.



Work closely in partnership with others

I will engage and collaborate with key people working with each tamaiti, in order to ensure their full range of needs are identified and addressed in a coordinated way.



Create, implement and review a written assessment and plan

I will create a written assessment and plan with each tamaiti and review them when required, in order to identify and address their full range of needs.



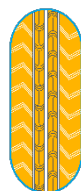
Ensure safety and wellbeing

I will take action every time I am worried about harm to te tamaiti, in order to protect them from harm and the impact of this on their long term wellbeing.



Use professional supervision

I will use professional supervision to critically reflect on my practice, in order to ensure my decision-making is robust and to build the quality of my professional practice.



Keep accurate records

I will document my key actions and decisions for each tamaiti I am working with, in order to ensure significant decisions are clearly evidenced and transparent.



Whakamana te tamaiti: Practice empowering tamariki Māori

I will apply the principles of Mana Tamaiti, Whakapapa and Whanaungatanga to my practice, in order to ensure I'm responsive to tamariki and whānau Māori.