

PRACTICE FRAMEWORK

OUR VISION

New Zealand values the wellbeing of tamariki above all else

OUR PURPOSE

To ensure that all tamariki are in loving whānau and communities where oranga tamariki can be realised

OUR VALUES

WE PUT TAMARIKI FIRST
We will challenge when things aren't right for the child.

WE BELIEVE AROHA IS VITAL
It keeps us focused on what is right.

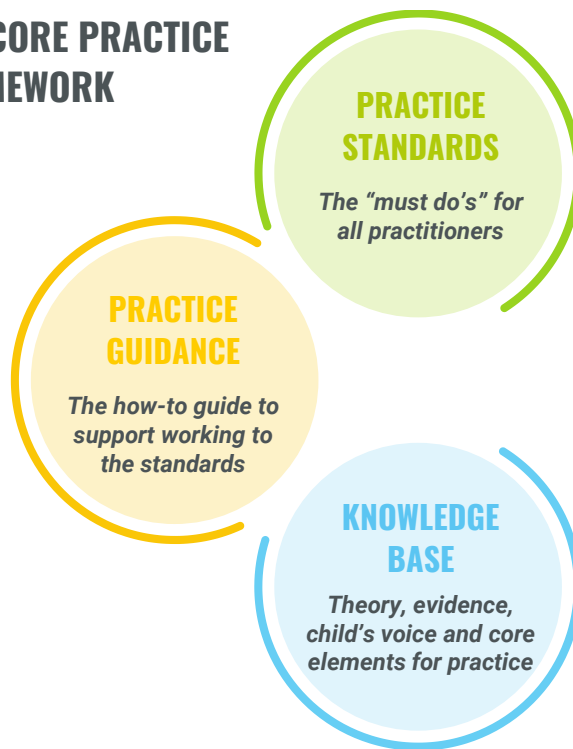
WE RESPECT THE MANA OF PEOPLE
We listen, we don't assume, and we create solutions with others.

WE ARE TIKA AND PONO
We do what we say we'll do.

WE VALUE WHAKAPAPA
Tamariki are part of a whānau and a community.

WE RECOGNISE THAT ORANGA IS A JOURNEY
We understand the long-term impact of our actions today.

THE CORE PRACTICE FRAMEWORK



THE PRACTICE STANDARDS

See and engage tamariki

See and engage whānau, wider family, caregivers and when appropriate victims of offending by tamariki

Work closely in partnership with others

Create, implement and review a written assessment and plan

Ensure safety and wellbeing

Use professional supervision

Keep accurate records

Whakamana Te Tamaiti: Practice empowering Tamariki Māori

WELLBEING OUTCOMES

Safety

Stability

Wellness

Security

Development

Enablers to embed the practice standards

Leadership

Coaching

Learning & Capability Development



Increase capacity

Freeing up practitioners

Quality assurance

Supervision

Implementation schedule

7-8 NOVEMBER 2017

Core Practice Framework internal office launch

Regionally led implementation with support from wider Oranga Tamariki teams

EARLY DECEMBER 2017

Site readiness assessment and plans due to be completed

FEBRUARY 2018

Implement standards (standards begin to apply to our work)

THROUGH UNTIL SEPTEMBER 2018

Spotlight on a standard each month (look at it in detail and consider how we can apply it in our roles)